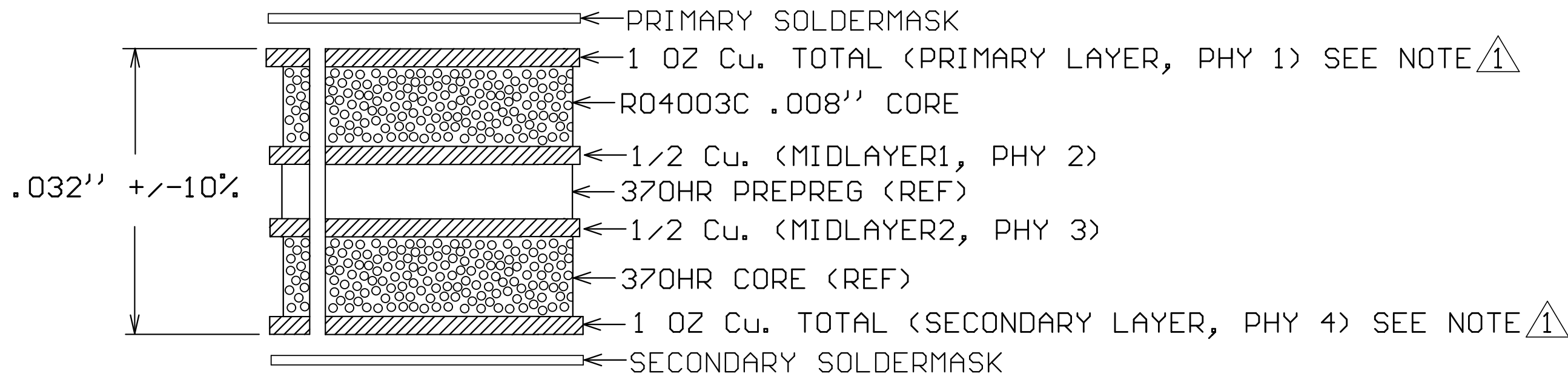


BOARD DIELECTRIC / COPPER STACKUP
FINAL BOARD THICKNESS
(EXCLUDING SOLDERMASK)

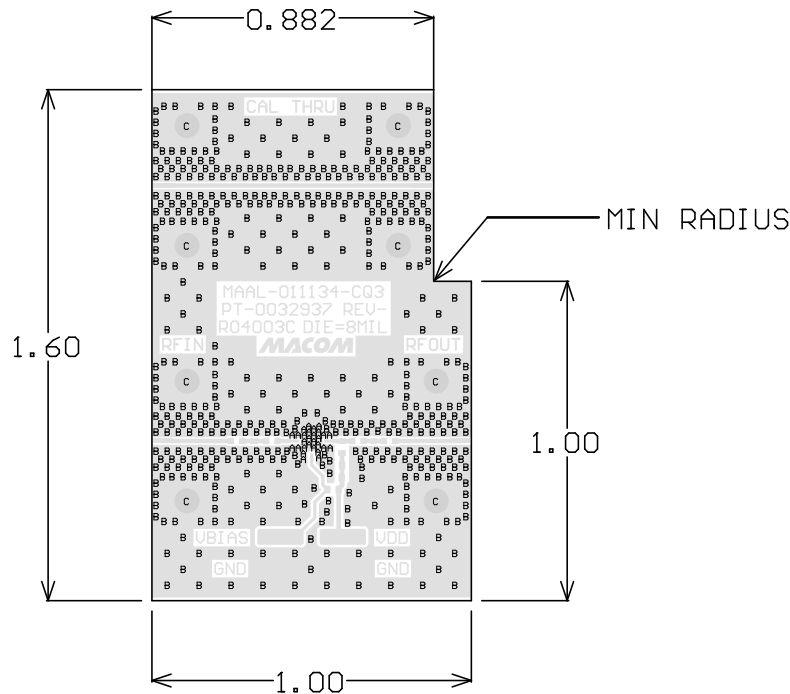


DETAIL 'A'

Symbol	Hit Count	FHS	Tolerance	Plated	Hole Type	Drill Layer Pair
A	28	8.00mil	+3/-8mil	PTH	Round	Top Layer - Bottom Layer
B	503	13.00mil	+3/-13mil	PTH	Round	Top Layer - Bottom Layer
C	8	78.00mil	+/-3mil	PTH	Round	Top Layer - Bottom Layer
	539 Total					

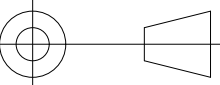
NOTES:

- MATERIAL:
 - R04003C DIELECTRIC 8 MIL CORE THICKNESS.
 - ISOLA 370HR DIELECTRIC.TOTAL COPPER THICKNESS ON PRIMARY AND SECONDARY SHALL BE 1 OZ. MATERIAL STACKUP, AND THICKNESS, PER DETAIL 'A'.
- PRIMARY AND SECONDARY SIDE FINISH:
 - ELECTROLESS NICKEL/IMMERSION GOLD (ENIG) PER IPC-4552.
 - ELECTROLESS NICKEL: 118-236 MICROINCHES [3.0-6.0 MICRONS]
 - IMMERSION GOLD: 2-6 MICROINCHES [0.051-0.152 MICRONS]SHALL PASS SOLDERABILITY TESTING PER IPC-J-STD-003. THERE SHALL BE NO PITS, PIN HOLES OR NODULES WITHIN EXPOSED METAL AREAS. STACKUP REPRESENTS FINISH THICKNESS.
- PCB SHALL BE BUILT PER IPC-6012 CLASS 2 AND CONFORM TO IPC-A-600 CLASS 2 LATEST REVISIONS.
- ALL HOLES TO BE PLATED THRU UNLESS OTHERWISE SPECIFIED.
- ALL 8.0 AND 13.0 MIL FHS SHALL BE FILLED WITH NON-CONDUCTIVE VIA FILL MATERIAL, CAPPED OVER, FINAL PLATING AND PLANARIZED FLAT.
- ALL FINISHED HOLE SIZES APPLY AFTER PLATING.
- COPPER PLATING IN THROUGH HOLES WILL BE .001'' MINIMUM AVERAGE WITH AN ABSOLUTE MINIMUM OF .0007''.
- DIMENSIONS SHOWN ARE FOR LOCATION OF 0,0 FOR THE DRILL FILE.
- LINE WIDTH AND SPACING SHALL BE WITHIN TOLERANCE OF 1 MIL. DO NOT ADJUST LINE WIDTH AND SPACING.
- ELECTRONIC DATA IS EQUAL TO THE FINISHED LINE WIDTH.
- LPI SOLDER MASK COATING SHALL CONFORM TO IPC-SM-840, CLASS T. SMOBC. COLOR GREEN.
- GROUND FILL SHALL EXTEND TO BOARD EDGES UNLESS OTHERWISE NOTED. EXPOSED COPPER ON BOARD EDGE SHALL BE ACCEPTABLE.
- ALL CPWG LINES ON LAYER 1 ARE CONTROLLED IMPEDANCE. A 14 MIL LINE WITH A 4.9 MIL SPACING SHALL BE 50 OHMS +/- 10% WITH REFERENCE TO THE GROUND PLANE WITH A DISTANCE OF 8 MIL FROM LAYER 2.
- ALL MATERIALS DESCRIBED IN THIS DOCUMENT/DRAWING SHALL BE IN COMPLIANCE WITH AND CONTAIN NO SUBSTANCES RESTRICTED OR REQUIRING SPECIAL RECLAMATION UNDER THE LATEST RoHS, WEEE OR ELV DIRECTIVES.



DRILL DRAWING (PHY 1)

X	MAAL-011134-CQ3
NEXT ASSY	USED ON
APPLICATION	

UNLESS OTHERWISE SPECIFIED INTERPRET DRAWING PER ASME Y14.5 DO NOT SCALE THIS DRAWING	UNLESS OTHERWISE SPECIFIED DIMENSIONS ARE IN INCHES		<div>MACOM</div> <div>WWW.MACOM.COM</div>			
	TOLERANCES ON					
	DECIMALS	ANGLES				
NOTE: THIS DRW INCORPORATES THIRD ANGLE PROJECTION <div></div>	.X ± .1 .XX ± .02 .XXX ± .005 .XXXX ± .0005	±0.5	TITLE			
	MACOM Technology Solutions CONFIDENTIAL INFORMATION SUBJECT TO NDA		MAAL-011134-CQ3 SMB			
<div>The information contained in this document or material is the valuable and confidential property of MACOM Technology Solutions Holdings, Inc. and/or its subsidiaries or affiliates collectively MACOM, provided to you subject to a non-disclosure agreement between you and MACOM solely for use in supporting MACOM's business as and to the extent MACOM authorizes in writing from time to time. This information shall be held in strictest confidence and shall not be reproduced, published, disclosed to others, or used for any purpose except as and to the extent specifically authorized by MACOM in a separate written agreement. permission is granted for reproduction, this legend must be included in any and all copies. This document or material shall be promptly returned to MACOM or destroyed upon request, completion of the use for which it was made available to recipient, or termination of MACOM's relationship with recipient, whichever first occurs.</div>	UNLESS OTHERWISE SPECIFIED 63/ ALL OVER		SIZE	DRAWING NO.	REVISION	
	MATERIAL	X	B	PT-0032937	-1	
	FINISH	X	SCALE:	1/1	PACKAGE TYPE:	3mmQFN50P-12LD
			SHEET		1	OF 1